

LEGEND

- STD. KERB
- KERB & NIB
- MOUNTABLE KERB
- CHANNEL
- FOOTPATH
- CHIPSEAL ONLY
- EDGE OF SEAL TRANSITION TO EXISTING
- STREET LIGHTS
- DRIVEWAY
- VEH. BARRIER

NOTES

- ALL COORDINATES ARE IN METRES AND IN TERMS OF GEODETIC 2000 MT. EDEN
- ALL LEVELS ARE IN METRES AND IN TERMS OF THE LANDS AND SURVEY DATUM (MEAN SEA LEVEL) AUCKLAND 1946

I, MICHAEL STEPHEN SMITH, MIPENZ CPENG HEREBY BELIEVE ON ALL REASONABLE GROUNDS THAT THE LOCATIONS OF KERBS, CHANNELS, STREET LIGHTS AND FOOTPATHS ARE ACCURATELY PLOTTED IN RELATION TO BOUNDARIES AND IS CORRECT AS THIS INFORMATION HAS BEEN PROVIDED BY THE CONTRACTOR OF THE WORKS - KERRY DINES LTD.

MICHAEL STEPHEN SMITH DATE

MIPENZ CPENG

	mN	mE
SL110	758581.36	421762.74
SL111	758549.82	421802.27
SL112	758527.40	421781.83
SL113	758489.55	421736.21
SL114	758530.73	421838.84
SL115	758502.49	421856.82
SL116	758461.14	421815.80
SL117	758418.82	421784.44
SL118	758391.39	421735.71
SL119	758365.80	421714.97

STREET LIGHT DETAILS

7.5m VICPOLE 125mm SQUARE SERIES COLUMN HOT DIPPED GALV, TWO PACT BLACK PAINT FINISH. CREE EDGE SQUARE SERIES T3M 40 WATT LED TYPE 3M OPTICS

REV	REVISION DETAILS	BY	DATE

PLOTTED: DATE: 05-23
 RJP
 DRAWING: DATE: 05-23
 RJP
 APPROVED: DATE: 05-23
 MSS

THIS DRAWING AND DESIGN REMAINS THE PROPERTY OF, AND MAY NOT BE REPRODUCED OR ALTERED, WITHOUT THE WRITTEN PERMISSION OF CIVILPLAN CONSULTANTS LIMITED. NO LIABILITY SHALL BE ACCEPTED FOR UNAUTHORISED USE OF THIS DRAWING.

CIVILPLAN CONSULTANTS

Level 9, Laidlaw House, 20 Amersham Way, Manukau, Auckland. Phone: 09 222 2445

PROJECT TITLE:
**DFH JOINT VENTURE
 HITCHEN STAGE 17 SUBDIVISION
 POKENO**

SHEET TITLE:
**As Built
 Rooding
 Stages 17A & 17C**

ISSUE STATUS: **AS BUILT**

SCALE: (A1/A3) 1:500 / 1:1000

SCALE BAR 0 10 20 30 40 50m

DRAWING NUMBER: **126701-17-AB300** REV: **A**

Filepath: P:\APPDATA\LOCAL\AUTODESK\CAD 2020\ENU\TEMPLATE C:\DATA\POKENO\HITCHEN\STAGE 17\AS BUILT\126701-17-AB300.DWG

STORMWATER COORDINATES

MH=MANHOLE, BC=BLANK CAP
CON=LOT CONNECTION

CON892	758486.70	421674.16
CON893	758472.26	421685.33
CON894	758455.88	421697.86
CON895	758443.47	421707.58
CON896	758429.27	421718.65
CON897	758413.38	421729.70
CON898	758432.92	421742.19
CON899	758446.88	421756.64
CON900	758463.77	421769.58
CON901	758476.90	421784.59
CON902	758488.06	421799.66
CON903	758503.50	421796.21
CON904	758519.99	421817.68
CON905	758529.00	421799.71
CON906	758515.23	421778.33
CON907	758502.19	421763.29
CON908	758489.40	421747.34
CON909	758467.12	421739.39
CON910	758466.84	421722.77
CON911	758466.52	421720.57
CON912	758498.76	421690.52
CON913	758512.46	421705.62
CON914	758524.85	421721.37
CON915	758538.06	421736.83
CON916	758549.97	421751.85
CON917	758563.47	421768.04
CON919	758457.10	421833.24
CON920	758443.72	421827.31
CON921	758431.27	421811.81
CON922	758417.44	421795.98
CON923	758404.89	421780.60
CON924	758391.88	421765.37
CON925	758379.07	421749.94

STORMWATER COORDINATES

MH=MANHOLE, BC=BLANK CAP
CON=LOT CONNECTION

MHRG4.0	758595.24	421772.57
MH4.1	758591.69	421768.01
MH4.2	758584.01	421774.02
MH4.3	758564.31	421769.23
MH4.4	758550.53	421779.60
MH4.5	758531.31	421800.16
BC4.6	758521.15	421818.77
MH5.1	758454.61	421755.29
MH5.2	758450.84	421758.92
BC5.3	758435.01	421740.03
MH6.7	758417.49	421734.11
MHRG7.1	758580.63	421783.62
MHRG7.2A	758571.12	421811.51
OUT7.2	758568.90	421818.17
MH11.1	758518.47	421779.63
MH11.2	758483.20	421737.22
MH11.3	758470.40	421738.69
BC11.4	758467.86	421719.99
MH12.1	758492.81	421801.42
MH12.2	758457.49	421830.52
MH12.3	758445.87	421825.64
MH12.4	758423.70	421799.43
MH12.5	758370.85	421736.44
MH12.6	758366.97	421734.87
MH12.7	758334.40	421759.82
MH13.1	758500.38	421862.14
MH14.0	758605.60	421857.06
MH14.1	758611.25	421873.95
MH14.2	758579.07	421892.63
MH14.3	758546.83	421911.34
MH14.4	758533.68	421918.90
MH14.5	758510.29	421879.53

NOTES

- ALL COORDINATES ARE IN METRES AND IN TERMS OF GEODETIC 2000 MT. EDEN
- ALL LEVELS ARE IN METRES AND IN TERMS OF THE LANDS AND SURVEY DATUM (MEAN SEA LEVEL) AUCKLAND 1946
- ALL LOT CONNECTIONS ARE 100NB PVC UNLESS SHOWN OTHERWISE.
- MANHOLE INVERT LEVELS ARE LISTED CLOCKWISE FROM THE OUTLET PIPE.
- ALL MANHOLES ARE 1050NB WITH STANDARD DUTY LIDS AND COVERS UNLESS SHOWN OTHERWISE. ALL STORMWATER PIPES 225NB AND OVER ARE RCRRJ CLASS 2 UNLESS SHOWN OTHERWISE EXCEPT FOR CATCHPIT LEADS WHICH ARE ALL CLASS 4. ALL CATCHPIT LEADS ARE 225NB UNLESS SHOWN OTHERWISE.
- ALL CONCRETE PIPES AND STRUCTURES ARE MANUFACTURED BY HYNDS PIPES. ALL PLASTIC PIPES ARE MANUFACTURED BY MARLEY.

STORMWATER COORDINATES

MH=MANHOLE, BC=BLANK CAP
CON=LOT CONNECTION

CP1	758582.60	421773.22
CP2	758578.20	421766.75
CP3	758559.78	421791.01
DCP4	758538.14	421801.15
CP5	758540.47	421783.48
CP6	758534.31	421788.48
CP7	758382.45	421726.54
CP8	758375.57	421730.73
CP9	758434.12	421788.74
CP10	758427.59	421793.45
CP11	758503.21	421843.65
CP12	758497.93	421849.99
CP19	758361.86	421729.39

B	Private CPs removed, layout amended	RJP	09-23
REV	REVISION DETAILS	BY	DATE

PLOTTED:	DATE:
RJP	05-23
DRAWN:	DATE:
RJP	05-23
APPROVED:	DATE:
MSS	05-23

THIS DRAWING AND DESIGN REMAINS THE PROPERTY OF, AND MAY NOT BE REPRODUCED OR ALTERED, WITHOUT THE WRITTEN PERMISSION OF CIVILPLAN CONSULTANTS LIMITED. NO LIABILITY SHALL BE ACCEPTED FOR UNAUTHORIZED USE OF THIS DRAWING.

CIVILPLAN CONSULTANTS

Level 9, Laidlaw House, 20 Amersham Way, Manukau, Auckland. Phone: 09 222 2445

PROJECT TITLE:
**DFH JOINT VENTURE
HITCHEN STAGE 17 SUBDIVISION
POKENO**

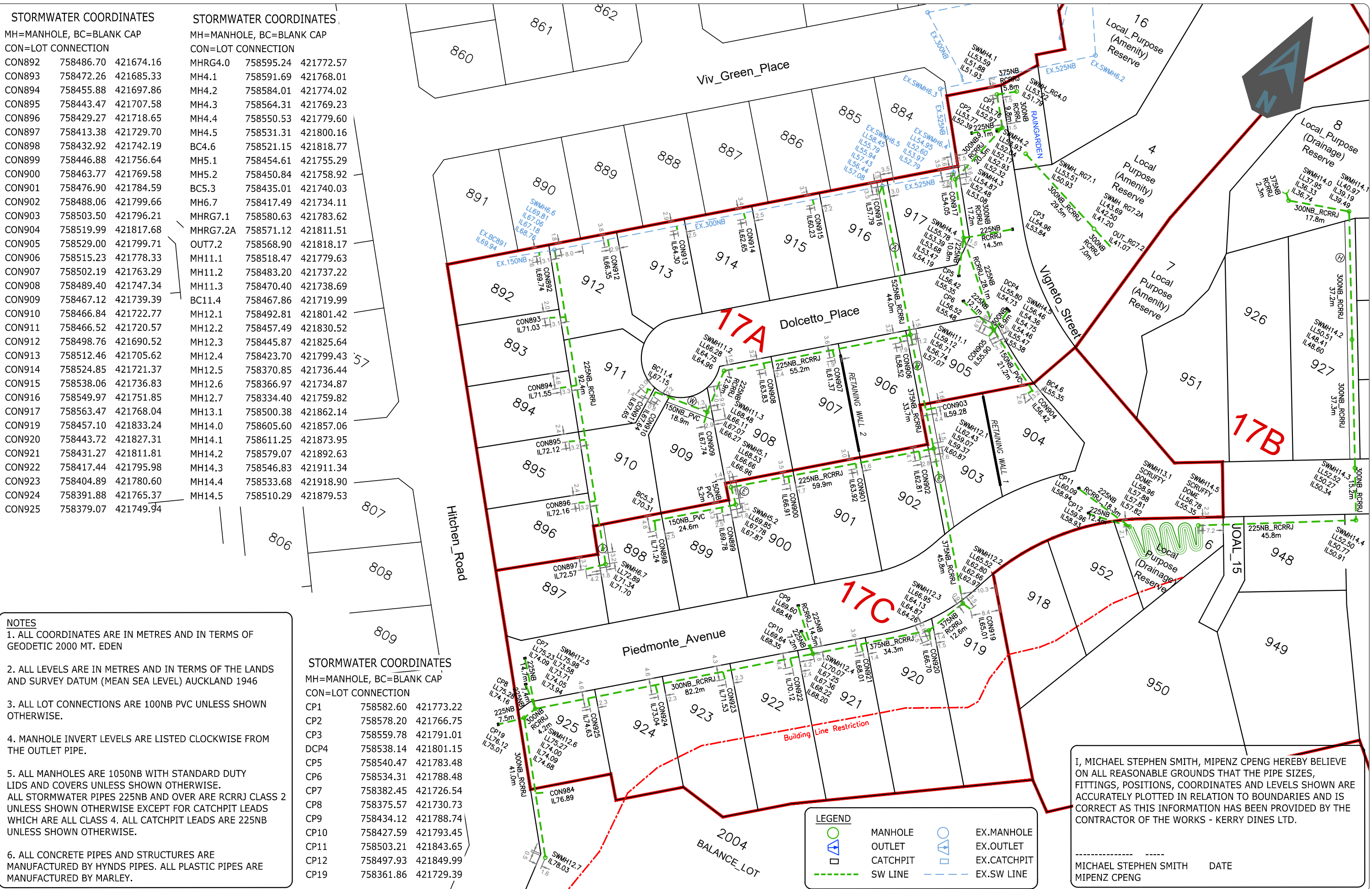
SHEET TITLE:
**As Built
Stormwater
Stages 17A & 17C**

ISSUE STATUS: **AS BUILT**

SCALE: (A1/A3) **1:500 / 1:1000**

SCALE BAR 0 10 20 30 40 50m

DRAWING NUMBER: **126701-17-AB400** REV: **C**



I, MICHAEL STEPHEN SMITH, MIPENZ CPENG HEREBY BELIEVE ON ALL REASONABLE GROUNDS THAT THE PIPE SIZES, FITTINGS, POSITIONS, COORDINATES AND LEVELS SHOWN ARE ACCURATELY PLOTTED IN RELATION TO BOUNDARIES AND IS CORRECT AS THIS INFORMATION HAS BEEN PROVIDED BY THE CONTRACTOR OF THE WORKS - KERRY DINES LTD.

MICHAEL STEPHEN SMITH DATE
MIPENZ CPENG

WASTEWATER COORDINATES

MH=MANHOLE, BC=BLANK CAP
CON=LOT CONNECTION

CON892	758485.98	421674.25
CON893	758471.58	421685.60
CON894	758457.53	421696.78
CON895	758443.15	421707.57
CON896	758429.00	421719.05
CON897	758414.29	421727.64
CON898	758432.58	421742.24
CON899	758447.93	421757.75
CON900	758463.00	421768.43
CON901	758475.85	421784.13
CON902	758487.93	421800.76
CON903	758511.46	421805.14
CON904	758520.43	421816.22
CON905	758523.30	421813.25
CON906	758515.19	421777.29
CON907	758501.98	421762.27
CON908	758489.15	421746.62
CON909	758465.98	421728.20
CON910	758466.57	421725.14
CON911	758470.31	421715.93
CON912	758500.82	421690.95
CON913	758513.54	421705.98
CON914	758526.66	421721.84
CON915	758538.06	421736.12
CON916	758550.50	421750.92
CON917	758562.96	421767.55
CON919	758466.06	421834.32
CON920	758444.68	421824.10
CON921	758430.93	421810.39
CON922	758417.97	421795.03
CON923	758405.40	421779.81
CON924	758392.62	421764.39
CON925	758380.27	421748.80

WASTEWATER COORDINATES

MH=MANHOLE, BC=BLANK CAP
CON=LOT CONNECTION

MHB5	758416.68	421730.24
MHC1	758551.27	421784.28
MHC2	758537.94	421796.81
MHC3	758472.70	421718.91
BCC4	758466.10	421728.66
MHH1	758525.85	421818.39
MHH2	758502.07	421789.86
MHH3	758493.24	421797.04
MHH4	758454.69	421751.34
MHH5	758450.95	421754.58
BCH6	758438.78	421739.51
MHJ1	758515.45	421843.07
MHJ2	758494.39	421847.71
MHJ2A	758479.27	421836.40
MHJ2B	758463.81	421829.59
MHJ3	758443.80	421817.09
MHJ4	758372.22	421730.77
MHJ5	758365.06	421730.40
MHJ6	758333.52	421754.70

NOTES

1. ALL COORDINATES ARE IN METRES AND IN TERMS OF GEODETIC 2000 MT. EDEN
2. ALL LEVELS ARE IN METRES AND IN TERMS OF THE LANDS AND SURVEY DATUM (MEAN SEA LEVEL) AUCKLAND 1946
3. ALL LOT CONNECTIONS ARE 100NB PVC UNLESS SHOWN OTHERWISE.
4. MANHOLE INVERT LEVELS ARE LISTED CLOCKWISE FROM THE OUTLET PIPE.
5. ALL MANHOLES ARE 1050NB WITH STANDARD DUTY LIDS AND COVERS UNLESS SHOWN OTHERWISE.
6. ALL PIPES ARE MANUFACTURED BY MARLEY AND MANHOLES BY HYNDS PIPES.

LEGEND

- MANHOLE
- WW LINE
- EX.MANHOLE
- EX.WW LINE

REV	DESCRIPTION	DATE	BY
C	LL MH C3 AMENDED	6-11-23	RJP
B	Lot 952 in stage B added	09-23	RJP
A			

PLOTTED:	DATE:
RJP	05-23
DRAWN:	DATE:
RJP	05-23
APPROVED:	DATE:
MSS	05-23

THIS DRAWING AND DESIGN REMAINS THE PROPERTY OF, AND MAY NOT BE REPRODUCED OR ALTERED, WITHOUT THE WRITTEN PERMISSION OF CIVILPLAN CONSULTANTS LIMITED. NO LIABILITY SHALL BE ACCEPTED FOR UNAUTHORISED USE OF THIS DRAWING.



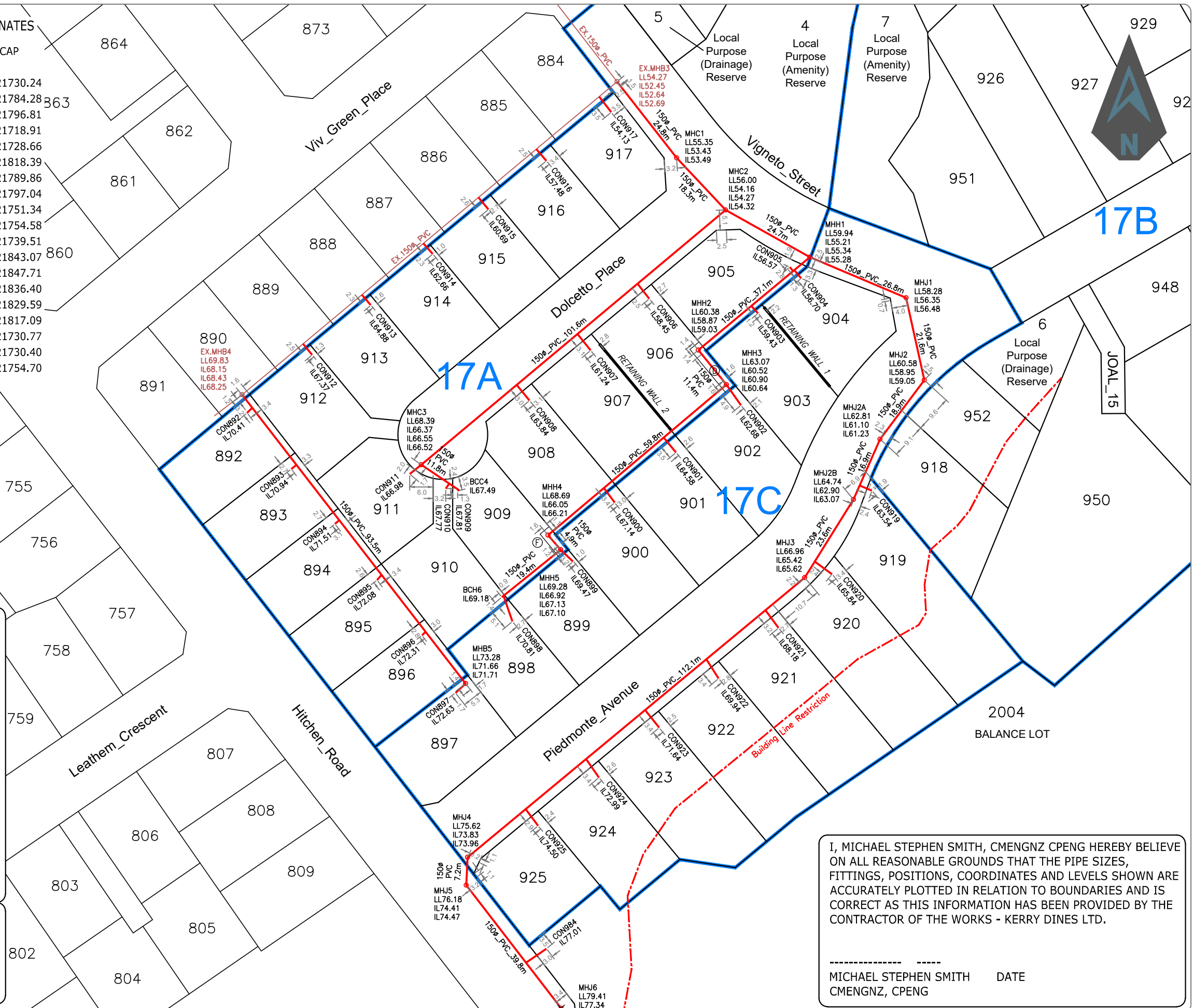
Level 9, Laidlaw House, 20 Amersham Way, Manukau, Auckland. Phone: 09 222 2445

PROJECT TITLE:	DFH JOINT VENTURE HITCHEN STAGE 17 SUBDIVISION POKENO
----------------	---

SHEET TITLE:	As Built Waste Water Stages 17A & 17C
--------------	---

ISSUE STATUS:	AS BUILT
SCALE: (A1/A3)	1:500 / 1:1000
SCALE BAR	0 10 20 30 40 50m
DRAWING NUMBER:	126701-17-AB402
REV:	C

Filepath: P:\APPDATA\LOCAL\AUTODESK\C3D 2020\ENU\TEMPLATE C:\DATA\POKENO\HITCHEN\STAGE 17\AS BUILT\126701-17-AB402.DWG



I, MICHAEL STEPHEN SMITH, CMENGNZ CPENG HEREBY BELIEVE ON ALL REASONABLE GROUNDS THAT THE PIPE SIZES, FITTINGS, POSITIONS, COORDINATES AND LEVELS SHOWN ARE ACCURATELY PLOTTED IN RELATION TO BOUNDARIES AND IS CORRECT AS THIS INFORMATION HAS BEEN PROVIDED BY THE CONTRACTOR OF THE WORKS - KERRY DINES LTD.

MICHAEL STEPHEN SMITH DATE
CMENGNZ, CPENG

WATER SUPPLY COORDINATES

WN892	758457.40	421662.09
WM893	758456.24	421663.13
WM894	758428.90	421684.25
WM895	758427.81	421685.06
WM896	758400.96	421706.10
WM897	758402.06	421743.10
WM898	758402.92	421744.22
WM899	758428.14	421774.58
WM900	758429.11	421775.83
WM901	758453.69	421805.31
WM902	758454.75	421806.60
WM903	758489.27	421825.79
WM904	758490.58	421826.63
WM905	758519.66	421778.00
WM906	758518.68	421776.61
WM907	758494.40	421747.03
WM908	758493.46	421745.88
WM909	758470.12	421727.15
WM910	758469.92	421726.11
WM911	758478.44	421713.91
WM912	758483.21	421713.92
WM913	758484.78	421714.72
WM914	758506.64	421739.01
WM915	758507.52	421740.26
WM916	758532.15	421769.57
WM917	758533.19	421770.89
WM918	758470.07	421833.73
WM919	758468.67	421833.09
WM920	758436.01	421810.45
WM921	758435.03	421809.26
WM922	758410.32	421779.80
WM923	758409.21	421778.54
WM924	758384.74	421748.94
WM925	758383.83	421747.68

WATER SUPPLY COORDINATES

FH=HYDRANT PV=PEET VALVE
SV=SLUICE VALVE WM=WATER METER

HYD50	758557.17	421777.96
SV51	758540.61	421780.49
SV52	758530.50	421789.27
PV53	758529.50	421788.68
HYD54	758519.47	421755.24
PV55	758518.60	421754.19
SV56	758510.36	421845.73
SV57	758509.93	421845.72
SV58	758510.30	421846.27
PV59	758502.28	421837.89
HYD60	758482.28	421822.24
HYD61	758387.09	421726.01
SV62	758382.26	421720.04
SV63	758382.30	421719.58
PV64	758368.44	421731.12
HYD65	758449.74	421667.34

NOTES

1. ALL COORDINATES ARE IN METRES AND IN TERMS OF GEODETIC 2000 MT. EDEN
2. ALL LEVELS ARE IN METRES AND IN TERMS OF THE LANDS AND SURVEY DATUM (MEAN SEA LEVEL) AUCKLAND 1946
3. ALL 150Ø IS mPVC BLUE. ALL 50Ø IS 63 OD MDPE.
4. ALL PIPES ARE MANUFACTURED BY MARLEY. ALL FITTINGS ARE MANUFACTURED BY HYNDS PIPES.

I, MICHAEL STEPHEN SMITH, CMENGNZ, CPENG HEREBY BELIEVE ON ALL REASONABLE GROUNDS THAT THE PIPE SIZES, FITTINGS, POSITIONS, COORDINATES AND LEVELS SHOWN ARE ACCURATELY PLOTTED IN RELATION TO BOUNDARIES AND IS CORRECT AS THIS INFORMATION HAS BEEN PROVIDED BY THE CONTRACTOR OF THE WORKS - KERRY DINES LTD.

MICHAEL STEPHEN SMITH DATE
CMENGNZ, CPENG

LEGEND

	WATERMAIN		WATER METER
	HYDRANT		
	PEET VALVE		
	SLUICE VALVE		
	END CAP		

REV	REVISION DETAILS	BY	DATE

PLOTTED:	DATE:
RJP	05-23
DRAWN:	DATE:
RJP	05-23
APPROVED:	DATE:
MSS	05-23

THIS DRAWING AND DESIGN REMAINS THE PROPERTY OF, AND MAY NOT BE REPRODUCED OR ALTERED, WITHOUT THE WRITTEN PERMISSION OF CIVILPLAN CONSULTANTS LIMITED. NO LIABILITY SHALL BE ACCEPTED FOR UNAUTHORISED USE OF THIS DRAWING.

CIVILPLAN CONSULTANTS
Level 9, Laidlaw House, 20 Amersham Way, Manukau, Auckland. Phone: 09 222 2445

PROJECT TITLE:
**DFH JOINT VENTURE
HITCHEN STAGE 17 SUBDIVISION
POKENO**

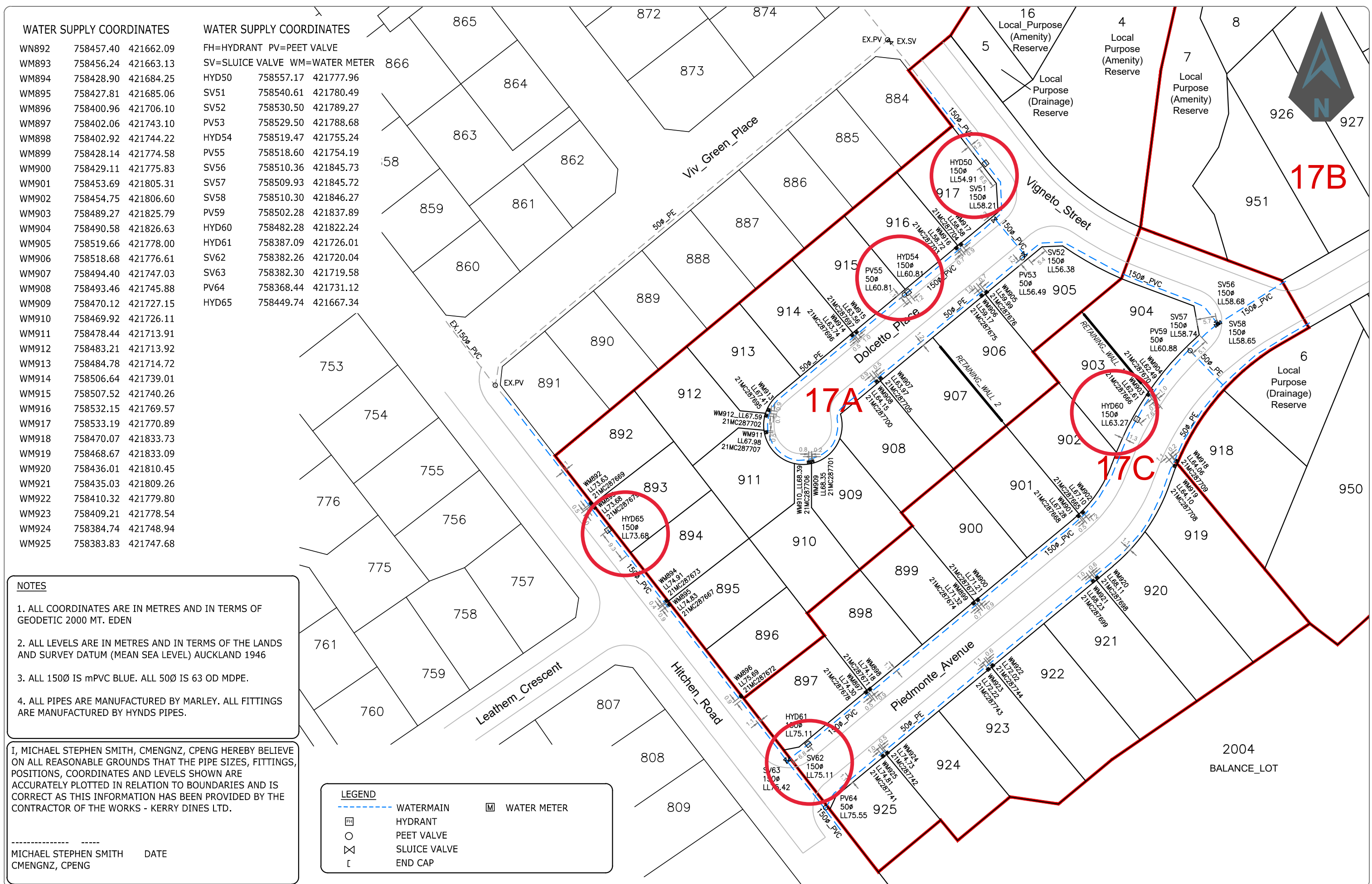
SHEET TITLE:
**As Built
Water Reticulation
Stages 17A & 17C**

ISSUE STATUS: **AS BUILT**

SCALE: (A1/A3) **1:500 / 1:1000**

SCALE BAR 0 10 20 30 40 50m

DRAWING NUMBER: **126701-17-AB500** REV: **A**



Filepath: P:\APPDATA\LOCAL\AUTODESK\C3D 2020\ENU\TEMPLATE C:\DATA\POKENO\HITCHEN\STAGE 17\AS BUILT\126701-17-AB500.DWG